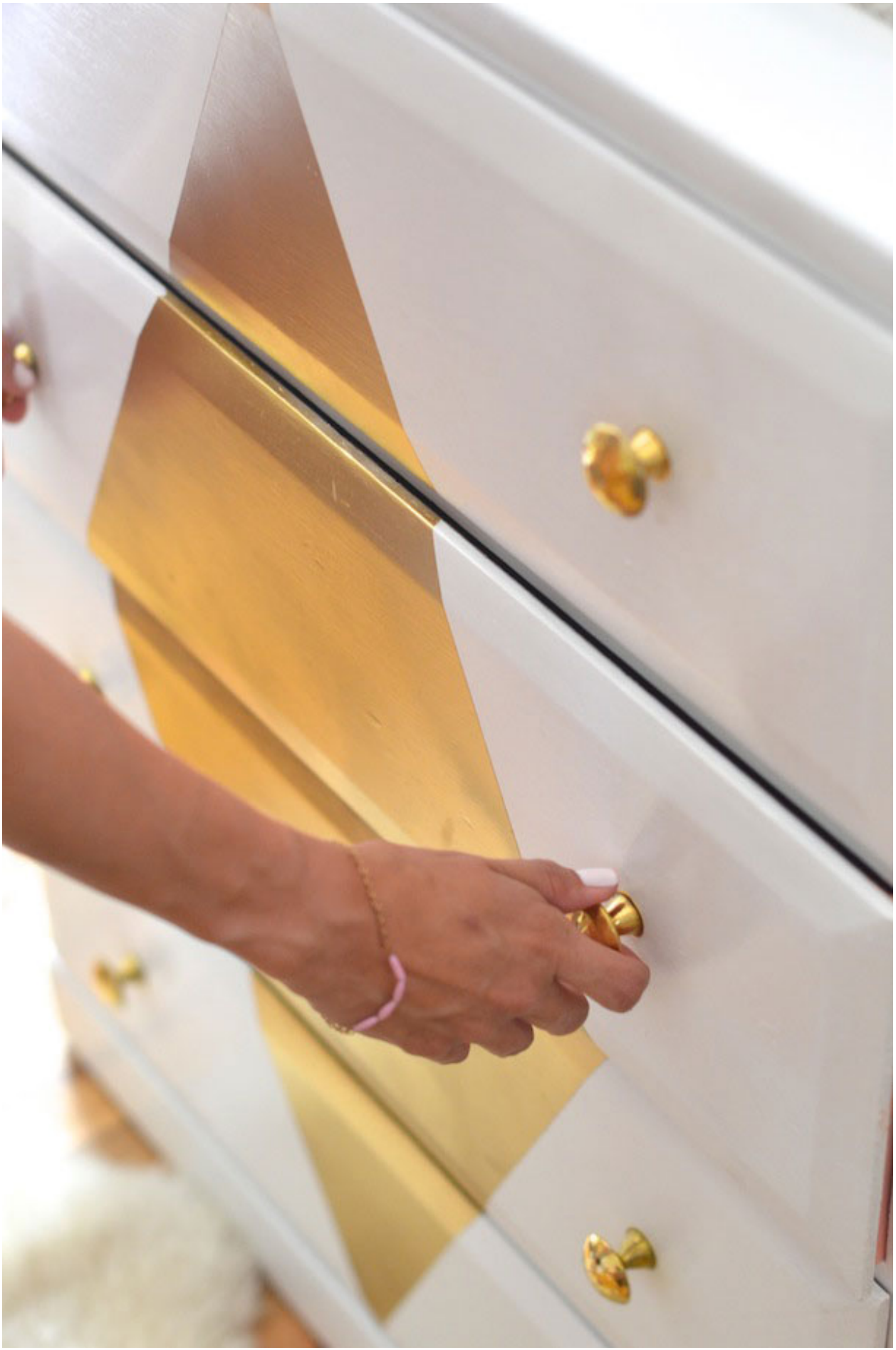


## Transformed :: Dressed up Dresser

By [clairezinnecker](#)

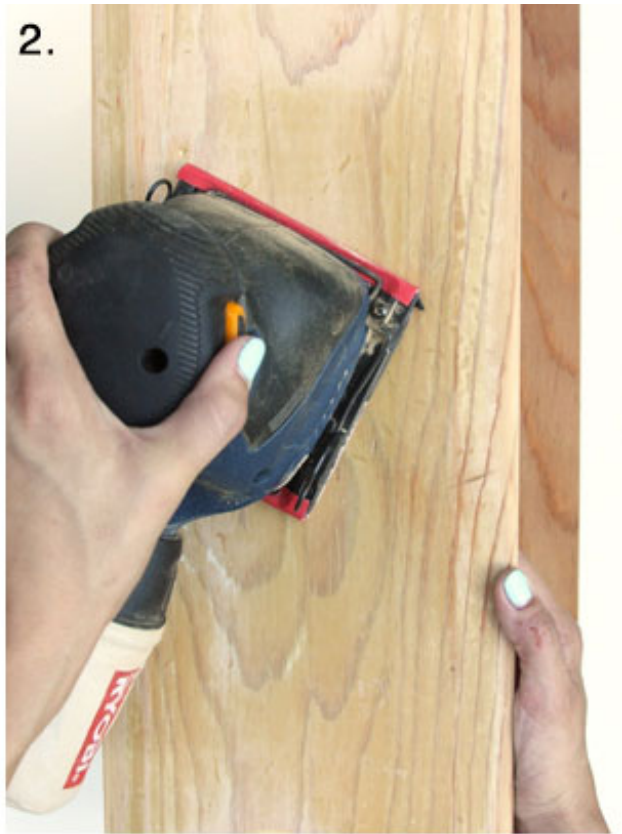


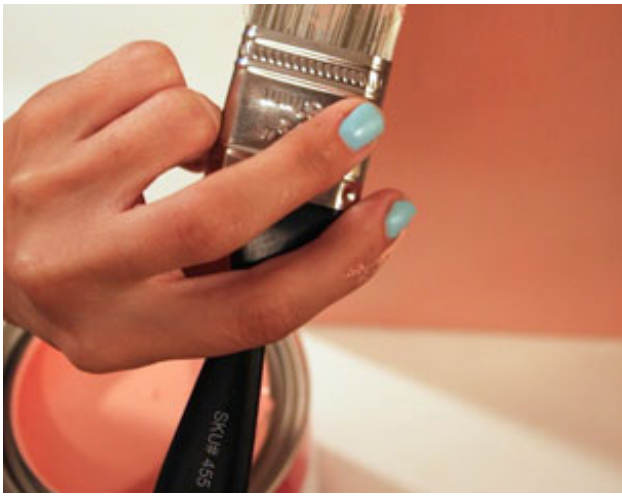
Refinishing a dresser can be super overwhelming. I'm often asked the questions: *What qualities should I look for when furniture hunting? How do I ensure that I prime properly? What paints should I use?* [Claire](#) here, and today's project has been a long time coming. Over the last couple months, Chanel has had some major dresser drama — broken drawers, socks and tee shirts scattered on the floor, it hasn't been pretty. So in an effort to upgrade her storage situation (*and celebrate us being roomies for a year!*), we set out to makeover this wooden dresser in a most glamorous way. Keep reading to learn how I did it and to get my tips for personalizing any sad furniture you have at home.











---

## *supplies*

---

- dresser (*search vintage shops, craigslist, your parents' attic, etc.*)
- screw driver
- hand sander (*or sand paper if your dresser doesn't have paint on it already*)
- Kilz 2 Primer and Sealer
- Martha Stewart Living Pure White MSL253 in High Gloss
- Behr Pink Mimosa P180-3 in High Gloss
- Krylon metallic gold spray paint
- knobs (*Hobby Lobby has a great selection*)
- ruler
- blue painters tape
- pencil
- phillips screw driver
- paint brushes

---

## *instructions*

---

1. Begin with a solid wood dresser. The less paint and gloss it has on it, the better. Remove any existing hardware.
2. Sand away any paint and gloss until you have as clean a slate as possible.
3. Brush off sanding residue and paint two coats of primer anywhere that paint will go.
4. Once primer is dry, paint the chest of the dresser and drawer fronts with 3 coats of pure white high gloss.
5. Paint the sides of the drawers with 2 coats of Pink Mimosa paint for a fun pop of color. Once the drawers are dry, place them back into the dresser frame. With a pencil and a ruler, measure and mark your design on the front of the dresser. Remove the drawers, tape off the pattern with blue painters tape and spray with metallic gold spray paint.
6. Once dry, remove the tape screw in new knobs. Slide the drawers back into the dresser frame.